

# HORIZON CLOUD EXPRESS

## A DIRECT CONNECTION TO CLOUD PROVIDERS



Horizon has partnered with Megaport so you can connect directly to more than 300 Cloud service providers via Megaport's ecosystem. This includes direct and secure connections to Amazon AWS, Microsoft Azure, Office 365, Sales Force, Oracle, Google and IBM.

### Why Choose Horizon Cloud Express?

- **Increased Security and Performance** - Using a Horizon Ethernet connection to directly connect to cloud service providers removes traffic from the public Internet.
- **Lower Cost for Direct Connect** - Connecting with Horizon and Megaport cuts cost from self provisioning
- **Flexible Connections** - Cloud Express can be configured based on your network: E-Line, E-Lan and E-Tree.
- **Scalable Bandwidth** - Service provisioning can be completed in seconds, not weeks.

Explore Horizon Cloud Express service now.

Securely connect to over 300 cloud providers through one service.



# HORIZON +

# MEGAPORT

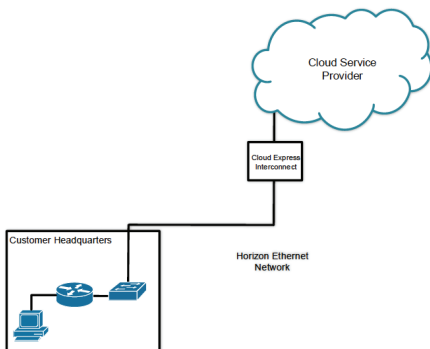
*Horizon has partnered with Megaport so you can connect directly to more than 300 Cloud service providers via Megaport's ecosystem.*

## Who is Megaport?

Megaport is a global leader in the fast growing elastic interconnection services market with a goal to connect everyone to everything. Through partnering with companies like Horizon, their Software Defined Network brings greater cloud connectivity to enterprise customers and data centers.

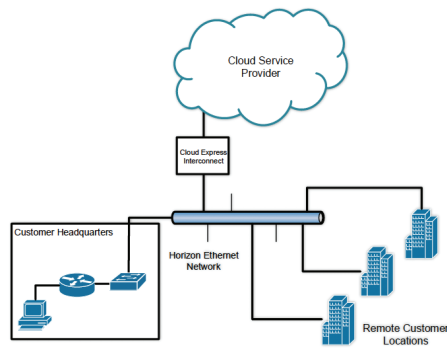
- Use a secure Horizon Ethernet connection to directly connect to over 300 cloud providers.
- Horizon will provision and manage your cloud provider connectivity through Megaport's automated software platform, making the process quick and easy.
- Megaport follows a "pay for what you use" connectivity model keep the service more cost effective.
- No fixed capacity requirements, Megaport is elastic and right-sized for your needs.
- Horizon works with you to configure an Ethernet connection that best fits your needs:

### E-LINE



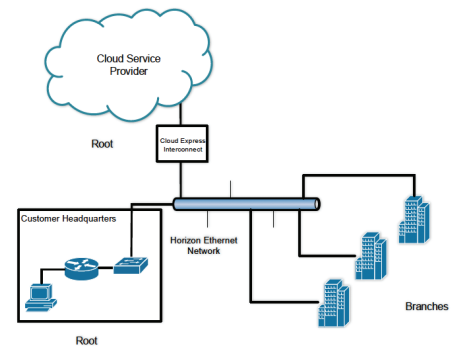
In this example the customer's site is configured as the Allocation on E-LINE and the CSP is configured as the Z location. This is how we would configure a standalone Cloud Express service.

### E-LAN



In this example the Cloud Express connection to the customer's CSP acts as an additional leg on their E-LAN network, allowing any-to-any communication with all customer sites.

### E-TREE



In an E-TREE configuration, the Cloud Express connection to the customer's CSP would typically be configured as an additional root on their network.

---

Contact your Fiber Account Executive for Cloud Express services

---



Horizonconnects.com | 866.418.8126 | [f](#) [t](#) [in](#)